



Incoming 1st Year Parent Information Evening

Lusk Community College

Wednesday 26th February 2025

Order of the evening

Welcome: Ms Ciara Grant – Deputy Principal

Overview of the school and its history:

- Ms Ciara Grant – Deputy Principal

Transitioning from Primary to Secondary School:

- Mr A Hendrick - Guidance Counsellor

Curriculum and subject options

- Mr. J B Conneely - Deputy Principal

AEN Department:

- Ms. S Ní Chleirigh - AEN Coordinator

Digital school: iPad information, book scheme updates and budgeting costs

- Mr. J B Conneely - Deputy Principal

Uniform

- Ms C. Grant

Future transitioning events: and communication channels

- - Ms C. Grant





Welcome

not knowing people
study effort
meet new people
communication
choosing subjects
getting bullied
i don't know
struggling with new subje
spanish
anxiety
making friends
new environment
not knowing anyone
diffrent teacher's
help
organised
the students
new things
friends
home work
change
crowds
tests
life
irish
rules
busy
uniform
more people
exams
bullying
lost
maths
getting
failing
bullies
meeting new people
the teachers
getting in trouble
not fitting in
being behinds in grades
getting lost in the schoo
bigger school
finding my way around
more homework
not smart enough
not knowing language





Overview

LCC Senior Management Team

- Principal – Mr. Pat Cole

- Deputy Principals
Mr. John B. Conneely
Ms. Ada Broderick
Ms. Ciara Grant



Lusk Community College

- Our school opened its doors in September 2013. We are part of DDLETB who have a network of schools.
- Our school currently has 991 students, and our new school building has state of the art facilities to offer.
- Projected Enrolment 2025 – 1140Students
- AEN Co-Ordinator: Ms. Sorcha Ni Chleirigh
- Guidance Counsellors: Mr. Adrian Hendrick, Ms. Antonia Lenoir & Ms Tracey Martyn

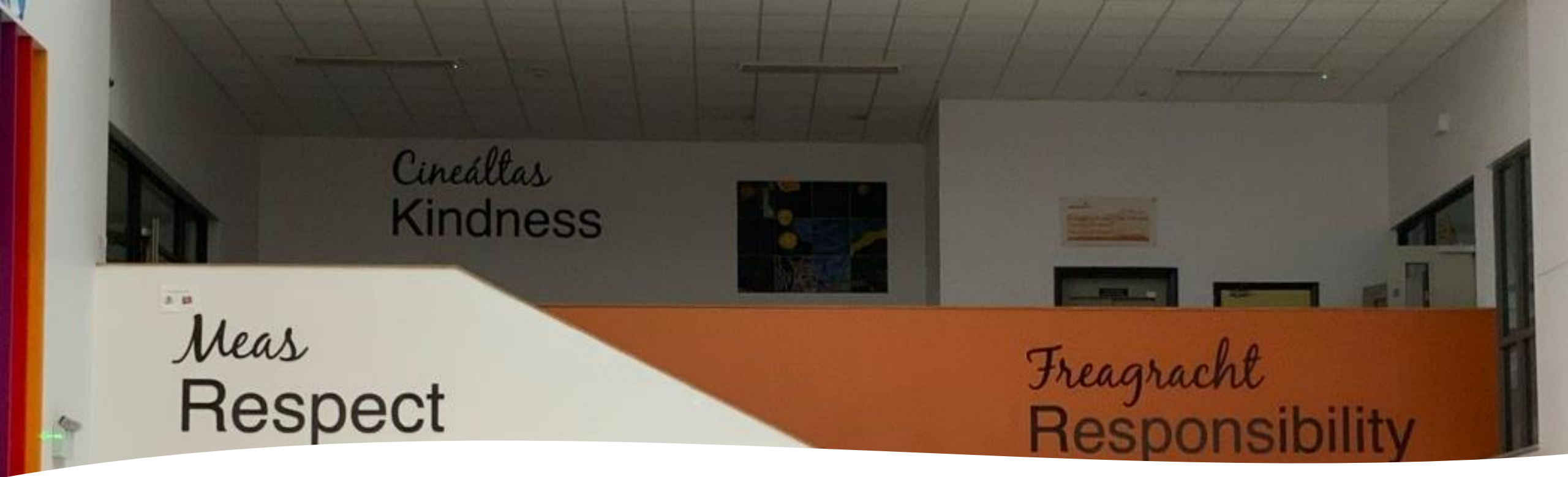




Lusk
Community
College
Board of
Management

Member Name and Role

- Ken Farrell *Chair*
- Pat Cole *Secretary*
- Liz Scott *DDLETB Rep*
- Helen O'Reilly *DDLETB Rep*
- Wayne Floody *Staff Rep*
- Sorcha Ni Chleirigh *Staff Rep*
- Audrey Stenson *Parent rep*
- Toby Sheward *Parent rep*
- Bernice Corless *Community Rep*
- Paul McNally *Community Rep*



Our Core Values

- Respect - one another and our school environment
- Responsibility – for our actions and our teaching and learning
- Kindness – creating an inclusive, kind and happy learning environment



Transitioning to Secondary School

Transition - Primary to Secondary



Starting secondary school is an exciting time - it's the beginning of a great big new adventure!

Similarities & Changes



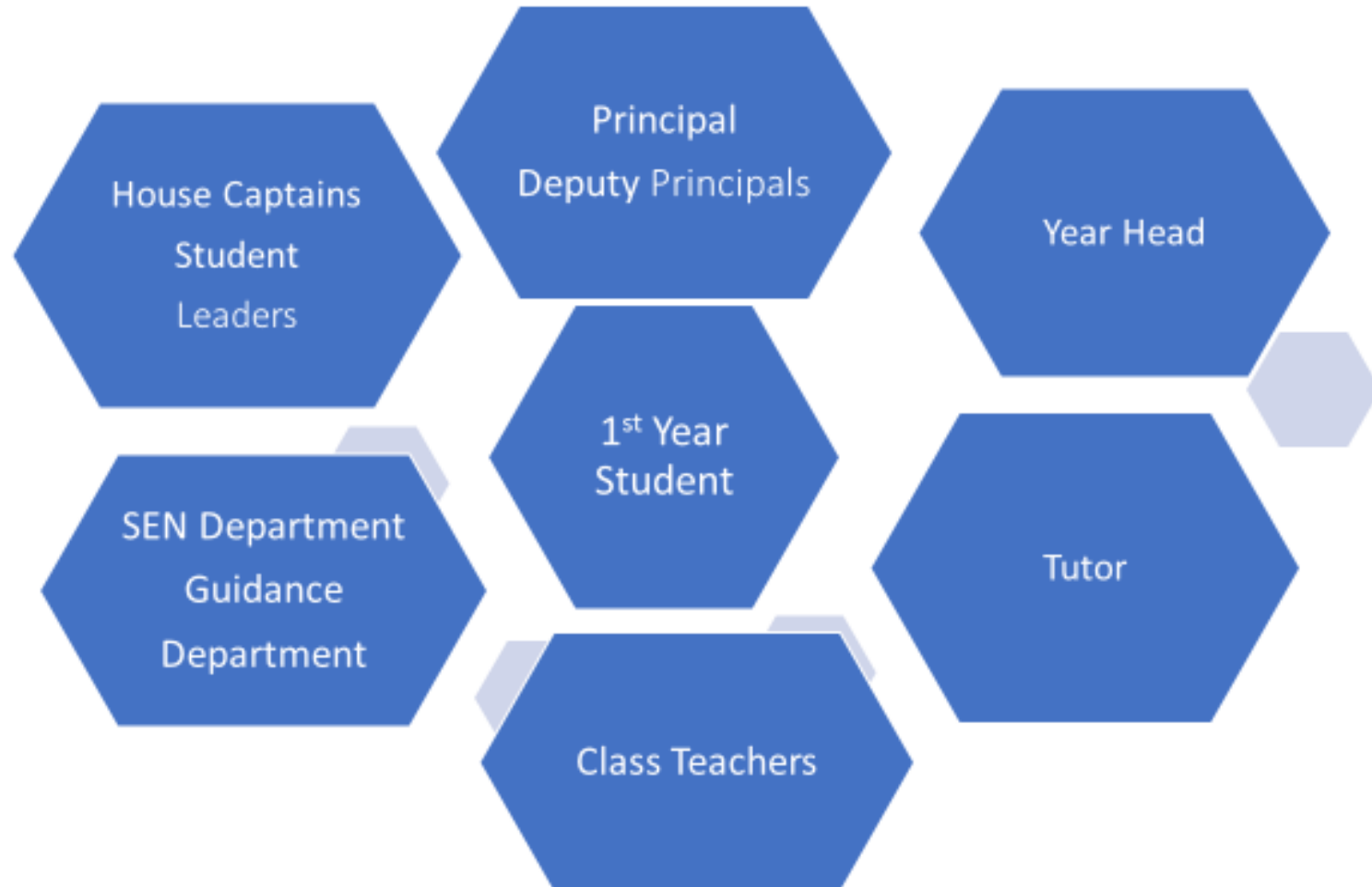
What is going to be the same in secondary school?

- Some subjects
- Wearing a uniform
- Getting homework
- Registration/Roll call
- Trips
- School Clubs & Activities
- Sport

What is going to be different or new about secondary school?

- School start and finish time
- New subjects
- Having lessons in different classrooms
- New teachers
- The journey!

Supports available for Incoming 1st Years





Tutor

- Every student is assigned to a base class which has a tutor.
- The Tutor is a pastoral role and is a direct point of contact for the class group
- The Tutor meets each morning with his/ her tutor group for an 8-minute Tutorial period.

Guidance Department - Extra Level of Support in Secondary School

Guidance Counsellors

- Mr. A. Hendrick
- Ms. A Lenoir
- Ms. T Martyn



If you are feeling.....

- Overwhelmed by worries
- Want a safe space to talk
- Need extra support



The Role of The Guidance Counsellor

The Career Guidance and Counselling Dept within Lusk Community College provides support for all students in three main are

- Personal and Social Guidance
- Educational Guidance
- Career and Vocational Guidance



Cognitive Ability

Entrance Assessments

2 HB Pencils, Rubber, Parer

nothing else except a snack and a drink for break

Mr. Hendrick 28/02/2025 and 01/03/2025

Entrance Assessment Dates:

Date	School
<ul style="list-style-type: none">• Friday 28th February• Arriving 9.00am - students will be walked up to here from their primary school	<ul style="list-style-type: none">• Lusk SNS
<ul style="list-style-type: none">• Saturday 1st March• Arrive directly at Lusk CC for 8.45am	<ul style="list-style-type: none">• RALET,• Ballyboughal NS,• Hedgestown NS,• Corduff NS,• All other non-feeder schools

Please remember!

Don't be worried if you're a bit nervous - that's perfectly normal!

Look forward to Lusk CC dream big, work hard, find your passion, make new friends and have fun.

We can't wait to meet you all on Friday and Saturday





PLANNING

WWI was a good time to plan the war as the British were busy. Joseph Plunkett was the primary planner of the rising. The main objective was to seize strategic buildings in Dublin. The Rising was planned to be nationwide, but due to a series of mishaps was confined to Dublin.

Joseph Plunkett was the primary planner of the rising. Patrick Pearse was a leader of the Irish both of these men were executed after the rising.

VOLUNTEERS

The leaders of the 1916 rising believed that the Irish volunteers would only help the rising if the British attacked first. They showed Eoin MacNeill, a leader of the volunteers, a forged document stating that the British were planning to disarm the volunteers. MacNeill gave the volunteers permission to take part in the rising.

Eoin MacNeill was the leader of the volunteers.

Arms and ammunition were to be stored on The Auld in County Kerry and be distributed to Irish volunteers. The Auld was captured by the British Navy, it was sunk and 20,000 rifles were lost. Eoin MacNeill found out that the document stating that the British would disarm the volunteers was forged. He cancelled the volunteers plans.

RISING

Although the chance of success was fading the rising went ahead on Easter Monday, April 24th 1916. Pearse thought that the British wouldn't expect this after the loss of "The Aud." It was a Bank Holiday Monday and many British soldiers in Dublin had the day off. With such short notice only Dublin volunteers were gathered.

On Easter Monday about 1,500 volunteers and members of the Irish Citizens Army marched from Liberty Hall to various strategic buildings. The GPO was one of the many buildings occupied and it was one of the most important buildings. It was made the headquarters of the rising.

Outside of the GPO Patrick Pearse read the proclamation of the Irish Republic.

The British were surprised, only 400 soldiers were on duty on Easter Monday, but by the next day the British had reinforcements. The British outnumbered the Irish by 5,000 and as the week progressed the British gained more control. By Friday it was clear that the rebels had lost. The City of Dublin was in ruins. Patrick Pearse surrendered unconditionally on Saturday.

In military terms the rising was a failure, but it put in motion events that lead to Irish Independence. Approximately 100 people were killed during the rising.

NO PARADES!
Irish Volunteer Marches Cancelled
A SUDDEN ORDER.

POBLAICHT NA h-ÉIREANN.
THE PROVISIONAL GOVERNMENT
IRISH REPUBLIC
TO THE PEOPLE OF IRELAND.



Curriculum and Subject Choice

Curriculum

- All 1st year students will participate in Core Subjects:
 - English
 - Irish
 - Maths
 - History
 - Geography
 - Science
 - Modern European Language – Spanish or French option

Students with learning exemptions from Irish will participate in Learning Support Classes during these lessons

- Students will also complete the following short courses:
 - CSPE
 - PE
 - Religious Education
 - SPHE



First Year Option Subjects

- Students will do 2 option subjects. These will be chosen before they start here in the college.
- There will be an Option Subject evening on the 26th March 2024 in the college. (provisional date)
- The options are as follows:
 - Art
 - Materials Technology Wood
 - Technical Graphics
 - Music
 - Home Economics
 - Applied Technology
 - Business Studies



A glance at a student's day

Students begin at 08.30am where they meet their tutor every morning.

from 10.00-10.15am

from 12.15-12.55pm

3.35pm

1.10pm

Start

Morning Break

Lunch

School Ends - Mon
to Thurs

Ends Friday

	Monday	Tuesday	Wednesday	Thursday	Friday
08:30	Tut 1Tut-A EF22 SD	Tut 1Tut-A EF22 SD	Tut 1Tut-A EF22 SD	Tut 1Tut-A EF22 SD	Tut 1Tut-A EF22 SD
08:38					
08:40	Hom 1Hom-8.4 WF38 EN; AMCN	Sphe 1Sphe-A EG12 SDN; KB	His 1His-A EG12 SDN; HB	Gra 1Gra-6.1 WG54 PC	Iri 1Iri-2.1 SG6 GM; EB
09:20	Hom 1Hom-8.4 WF38 EN; AMCN	His 1His-A EG12 SDN; KB	His 1His-A EG12 SDN; SD	Gra 1Gra-6.1 WG54 PC	Spa 1Spa-9.1 EF22 SD; SP
10:00					
10:15	Geo 1Geo-A EG19 JMC; KB	Cspe 1Cspe-A EG17 EKI; JMC	Eng 1Eng-A SG7 JG; KMN	Sci 1Sci-4.4 SG4 CJ	PE 1PE -11.1 NG PE HALL LMC
10:55	Iri 1Iri-2.1 SG6 GM; EB	Hom 1Hom-8.4 SG1 EN; AH	Cod 1Cod-A WF41 EOS	Iri 1Iri-2.1 SG6 GM; EB	PE 1PE -11.1 NG PE HALL LMC
11:35	MATH 1MATH-A SG2 OOR; FO; SNC; GJ	Hom 1Hom-8.4 SG1 EN; AMCN	Iri 1Iri-2.1 SG6 GM; EB	Eng 1Eng-A SG7 KMN	Sphe 1Sphe-A EG12 SDN
12:15					MATH 1MATH-A SG2 OOR; SNC; GJ
12:55	Spa 1Spa-9.1 EF22 FO; SD	Spa 1Spa-9.1 EF22 SD; HB	Spa 1Spa-9.1 EF22 FO; SD	MATH 1MATH-A SG2 OOR; FO; GJ	
13:35	Eng 1Eng-A SG7 HB; KMN	Eng 1Eng-A SG7 JG; KMN	Acc 1Acc-A WF49 EL; SP	Geo 1Geo-A EG18 JMC	
14:15	Gra 1Gra-6.1 WG54 PC	MATH 1MATH-A SG2 OOR; FO; SNC; GJ	Sci 1Sci-4.4 WF48 CJ	Geo 1Geo-A EG18 JMC	
14:55	Gra 1Gra-6.1 WG54 PC	MATH 1MATH-A SG2 OOR; FO; GJ	Sci 1Sci-4.4 WF48 CJ	Cspe 1Cspe-A EG15 JMC	

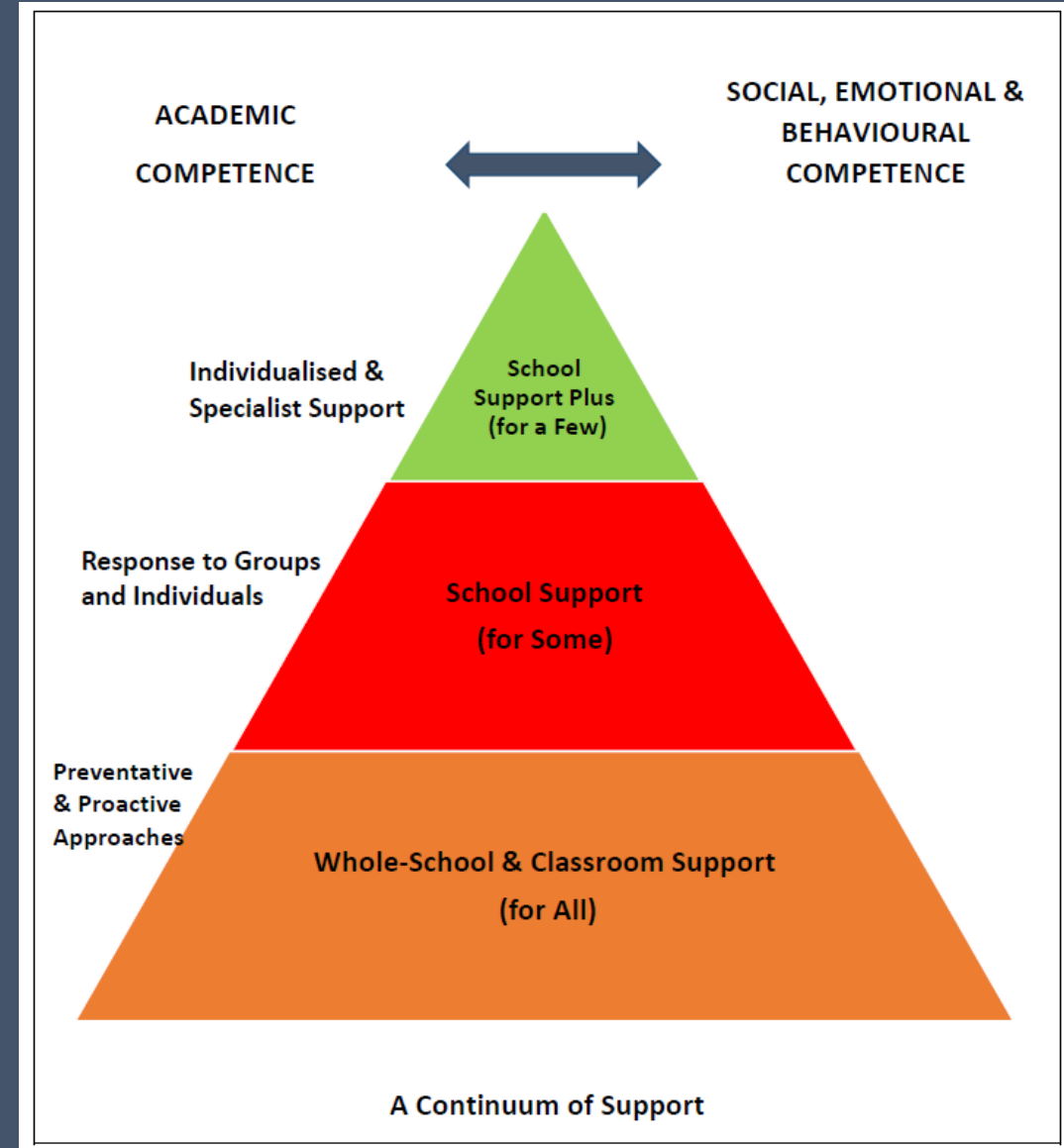
Sample Student Timetable



AEN - Additional Educational Needs

SEN

- Continuum of Support:
- Support for all
- Support for some
- Support for few





TYPES OF SUPPORT NEEDED

We have a vast array of difficulties across the entire student body, including

Anxiety Disorder

Attention Deficit (and Hyperactivity) Disorder (ADD/ADHD)

Autism

Specific Learning Difficulties (SLD) Dyslexia; Dyspraxia or DCD; Dyscalculia;
Dysgraphia

General Learning Difficulties (GLD)

Pathological Demand Avoidance (PDA)

Oppositional Defiance Disorder (ODD)

Hearing or Visual Impairment

Physical difficulties such as Cerebral Palsy

Emotional and Behavioural Difficulties (EBD)

as well as medical issues such as Diabetes; Epilepsy; Various allergies.

In class support: differentiated teaching delivered by the class teacher

In-class support: additional teacher in the class to deliver targeted support to small number of students

Withdrawal: targeted support for very small number of students instead of certain class – usually Irish if exemption is in place.

EAL – English as an Additional Language: students who meet the criteria will receive targeted support to boost their English language skills

Differentiated curriculum such as L2LP - in-class and withdrawal support

Very specific criteria to be met and evidence to be gathered for significant support to be provided

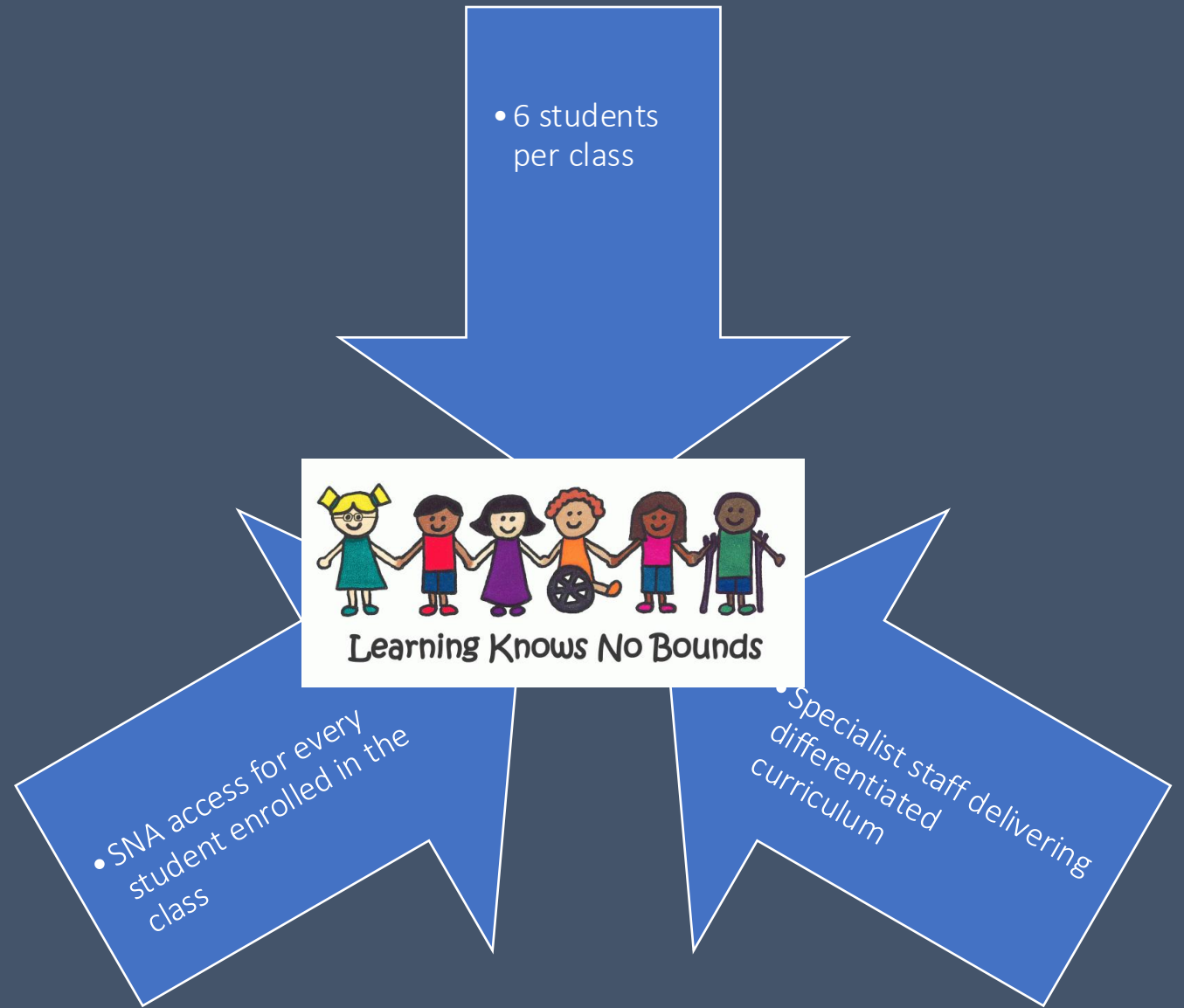
SNA support for significant primary care needs only – 4 SNAs for the mainstream school

TYPES OF SUPPORT PROVIDED



IONTAS

We are very lucky to have 2 special classes for Autistic students included in our school Admission to this class requires a specific diagnosis as well as a detailed recommendation from a psychologist. Our classes are at capacity with a waiting list.





Documentation for the school

Students who have an identified additional need should have documentation or report from relevant professionals stating the need or diagnosis and recommendation for educational setting such as an exemption from the study of Irish

Please supply this information to the school so we can best support every student in our care

We cannot get the information from the primary school without written consent from a parent/guardian

Visits to the primary schools by the Transition Team are currently taking place

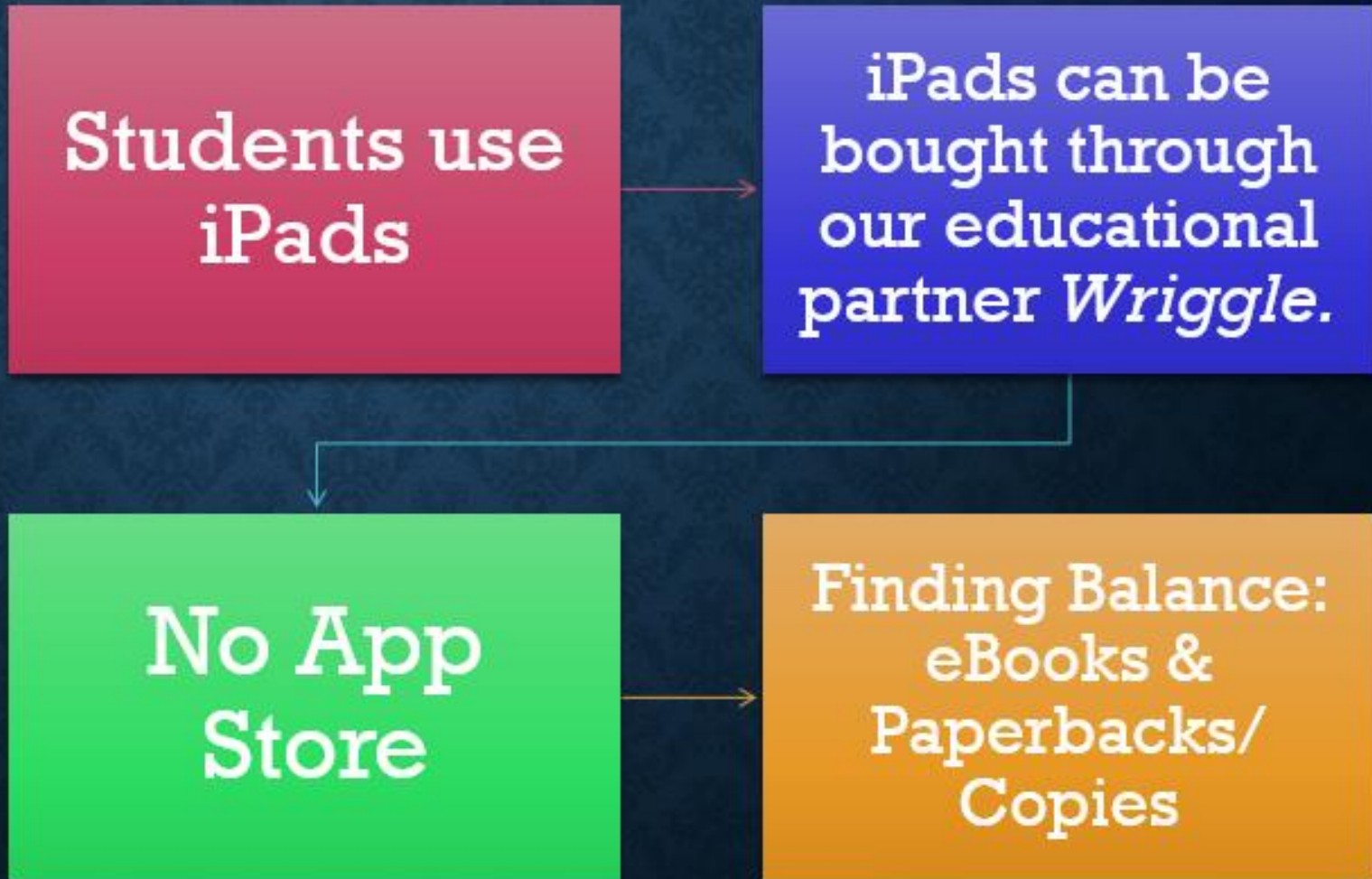
Email incoming@luskcc.ie and FAO Sorcha Ni Chleirigh/Aen team with any queries



Digital School



WE ARE A DIGITAL SCHOOL





Empowering Learners

Through Technology

Wriggle's expert team work solely in the education sector providing managed laptops & tablets, technology training and tech support to schools, colleges, parents and students.

www.wriggle.ie



All iPads in Lusk Community College must have JAMF Software installed

This is done by Wriggle

Lusk
CC Wriggle -
Store Code
TBC

Opening
8th April
Closing
24th June



Online Store Login

Now Available - Flexifi

Flexifi

New Payment Option

To finance your device order, and spread your monthly payments up to three years, apply below for pre-approval and enter your code at checkout. *

[APPLY FOR FLEXIFI](#)

* Please note: You need a pre-approval code to use this payment method at checkout.

* This option is only available for stores with devices and services, and does not apply to book only services.

Store Login

Please enter your school specific store code below.

12345678

[LOGIN](#)

What's included in your child's Wriggle Technology Bundle?

- iPad 10th Gen 256GB €569
- Heavy Duty Case €50
- Wriggle Services and Support for 6 years €120. See what's included [here](#)
- Device Management license included
- Jamf Safe Internet
- Provisioned Educational Apps (chosen by your school) available on your device
- FREE access to 100s of short training videos in safely using technology for learning for parents and students on Wriggle Connect. See what you have access to [here](#)
- Insurance offering available at time of purchase or alternatively at <https://wriggle.ie/parents/ordering/insurance-repairs/>



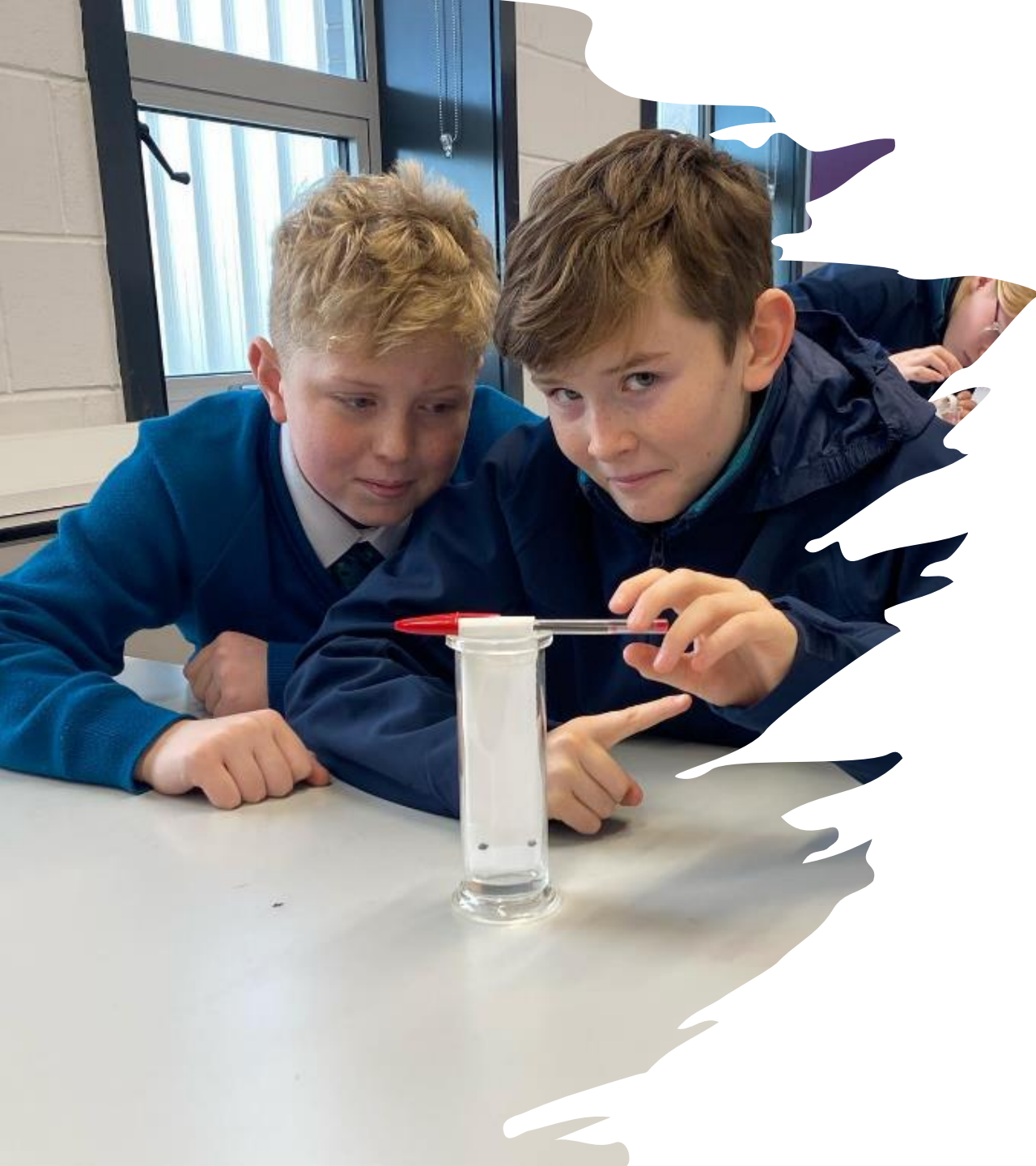
Insurance for iPad - **RECOMMENDED**

Do not purchase books from Wriggle

LCC Store/Wriggle Updates - texts



- You will receive your iPad in the post from Wriggle
- Your school iPad is not a toy



On our side, we are doing the following:

- Generating email addresses for students
- Generating Publisher App log ins
- Provide information to Wriggle as to what goes on the iPad. (Apps)
- Students do not have access to App Store
- JAMF – Management Software
- Student iPad Induction
- Parents iPad Induction

It is a serious breach of our AUP and COB for a student to remove management software

Lusk Community College – Book Loan Scheme 2025

- Students have an iPad
- Students have e-Books on their iPad
- Students have hard copy of the book at home
- Students will also be provided with stationary as part of this scheme



Lusk Community College Book Loan Scheme 2025

August 2025:

- Parents collect books and stationary from the school before term begins (August 2025) date TBC



Student Support Services 2025

The areas of payment covered by this include:

- Lockers, maintenance
- Student Insurance (24 hour)
- Text Messaging
- Buses
- Extra-curricular
- School Trips

The cost of this Voluntary payment is €120





Coláiste Pobail Lusca



VS
WARE

ONLINE PAYMENTS



DIGITAL SUPPORT



etb

Bord Oideachais agus Oiliúna
Átha Cliath agus Ibhán Laoghaire
Dublin and Dún Laoghaire
Education and Training Board

School Payments System

Login

[Forgot your password?](#)

Create Account

Lusk Community College
[Privacy](#) | [Terms](#) | [Help](#) | [Staff](#)



Instructions for Online Payments

In order to facilitate ease of payment of school funds, Lusk Community College is now using the MIT online payment system. This means that you can pay school fees through our secure online system by credit or debit card and keep track of payments paid and print off a receipt.

To set up your online payment account:

1. Go to www.luskcommunitycollege.ie select the "ONLINE PAYMENTS" button located in the middle of the homepage.
2. For your first time to login select the "Create Account" button.
3. Enter your child's first name, surname and PPS number. This system does not accept Irish fadás, accents or apostrophes (e.g. if your surname is O'Shea, enter OShea –no spaces)
4. Press NEXT.
5. You will be asked to confirm if your address and contact details are correct and you must enter an email address for further communication. (This email address will be used as your username) You must also create and confirm a password. Keep a secure record of these as you will use them to login on future occasions.
6. Note that you can edit your child's personal and contact details on the system. If you notice an error in your [details](#) please click on the "Edit" button and "Update" once corrections have been made. Please tick the box confirming your details are now correct and click the "Confirm" button.
7. You will see at least two tabs in the payment screen depending on how many children you have attending Lusk Community College. Choose the "Family" tab if you wish to pay a number of fees or choose your child's name if you wish to make a payment against that individual.
8. Choose the amount you wish to pay from the payment dropdown and click the NEXT button.
9. Enter your credit card /debit card details as instructed on the screen and click on the NEXT button.
10. You can print and/or save your receipt.

To make payments for the coming academic year, click on the 2022/2023 Year tab.

We would appreciate your support in using this online system. If you have any difficulties using this system at any time, please do not hesitate to contact our school office on 01-5130000 for assistance.

Thank you for your co-operation and contribution. Please retain these instructions for future use.

You are advised to use [Google Chrome](#) for this programme. If not available, please ensure that you have the most up-to-date version of the system you are using installed. Please ensure the details input are exactly as recorded on the application form.

Details on setting this up will be sent out in the coming weeks.



UNIFORM

The School Uniform



STUDENT UNIFORM

- Teal Blue Crested School Jumper
- Tartan Skirt or Navy Trousers
- White blouse/shirt with collar
- House tie with school crest
- Navy socks or navy tights
- Full black footwear
- Navy crested school jacket

STUDENT PE UNIFORM

- Navy tracksuit bottoms
- Light blue crested sports T-shirt
- School crested tracksuit top

The School Uniform

School Shoes

All students must also wear **black footwear**.



Uniform – Grants

- Uniforms are available to buy online <https://grantsclothing.ie/category/lusk>
- Each student will pay for a tie and will receive the tie on their first day of school from their tutor.
- **Grants will open a POP UP SHOP in Lusk CC**
 - Wednesday 7 May, 3.00 - 7.00pm
 - Thursday 8 May, 3.00 - 7.00pm
- All students must have the full school uniform, PE uniform and school jacket.
- A savings club will be operating online with Grants if people wish to pay off for their uniform.

Contact : Tel: (01) 6791626 | Email: info@grantsclothing.ie





Future Events and Communication



ONLINE PAYMENTS



DIGITAL SUPPORT

ENROLMENT FORMS



ACCELERATED READER



Lusk Community College

Raheny Lane, Rathmore Road, Lusk,
Co. Dublin.

Phone 01 513 0000
Email adminluskcc@dletb.ie
Website www.luskcommunitycollege.ie



Coláiste Pobail Lusca

Lána Ráth Éanaigh, Bóthar an Rátha Mhóir,
Lusca, Contae Bhaile Atha Cliath.



Important Dates for Incoming First Years 2025

Day	Date	Event
Wednesday	26 th February 2025 7pm	Information Evening (Online)
Friday	28 th February 2025 9am-1pm	CAT4 Assessments for Lusk SNS
Saturday	1 st March 2025 8:45am – 12:30pm	CAT4 Assessments for all schools (other than Lusk SNS)
Wednesday	26 th March 2025 Provisional TBC	Subject Options Talk
Tuesday	8 th April 2025	Wriggle Store Opens
Wednesday	7 th May 2025 3-7pm	Grants Uniform Pop-Up Shop
Thursday	8 th May 2025 3-7pm	Grants Uniform Pop-Up Shop
Tuesday	24 th June 2025	Wriggle Store Closes
Provisionally week beginning	18 th August 2025	Collection of Book/ Stationary

The above dates are subject to change.

Parent/ Guardians will be informed about any changes via text message.

Communication Channels

Info Pack: To be sent out in coming weeks.

Text Messaging:

Microsoft Forms:

- Email contacts
- Medical needs

Vsware – More detail re this at the Options Information Night

Website: <https://www.luskcommunitycollege.ie/>



LCC School Office:

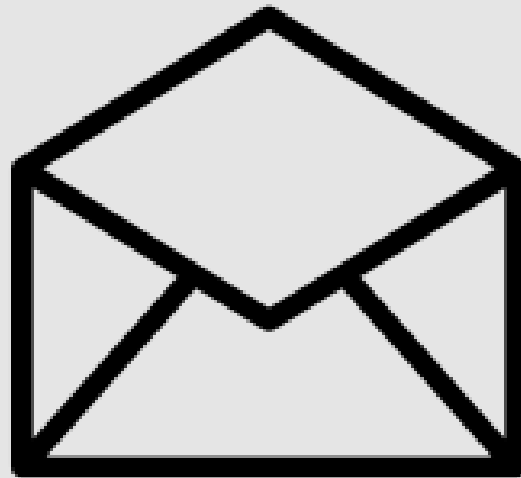
Mon- Thursday 8.30 - 4.00pm

Friday 8.30 – 1.30pm

We are a cashless office

All Payments can be made throughout MIT
Online Payment System

Contact:



incoming@luskcc.ie

adminluskcc@ddletb.ie

School Office Phone Number :
01-5130000

Questions?

